


RESEARCH ARTICLE

Open Access



The use of single armed observational data to closing the gap in otherwise disconnected evidence networks: a network meta-analysis in multiple myeloma

Susanne Schmitz^{1*} , Áine Maguire^{2,3}, James Morris⁴, Kai Ruggeri^{3,13}, Elisa Haller⁵, Isla Kuhn⁶, Joy Leahy⁷, Natalia Homer⁴, Ayesha Khan⁸, Jack Bowden⁹, Vanessa Buchanan⁴, Michael O'Dwyer¹⁰, Gordon Cook¹¹ and Cathal Walsh¹²

Abstract

Background: Network meta-analysis (NMA) allows for the estimation of comparative effectiveness of treatments that have not been studied in head-to-head trials; however, relative treatment effects for all interventions can only be derived where available evidence forms a connected network. Head-to-head evidence is limited in many disease areas, regularly resulting in disconnected evidence structures where a large number of treatments are available. This is also the case in the evidence of treatments for relapsed or refractory multiple myeloma.

Methods: Randomised controlled trials (RCTs) identified in a systematic literature review form two disconnected evidence networks. Standard Bayesian NMA models are fitted to obtain estimates of relative effects within each network. Observational evidence was identified to fill the evidence gap. Single armed trials are matched to act as each other's control group based on a distance metric derived from covariate information. Uncertainty resulting from including this evidence is incorporated by analysing the space of possible matches.

Results: Twenty five randomised controlled trials form two disconnected evidence networks; 12 single armed observational studies are considered for bridging between the networks. Five matches are selected to bridge between the networks. While significant variation in the ranking is observed, daratumumab in combination with dexamethasone and either lenalidomide or bortezomib, as well as triple therapy of carfilzomib, ixazomib and elozumatab, in combination with lenalidomide and dexamethasone, show the highest effects on progression free survival, on average.

Conclusions: The analysis shows how observational data can be used to fill gaps in the existing networks of RCT evidence; allowing for the indirect comparison of a large number of treatments, which could not be compared otherwise. Additional uncertainty is accounted for by scenario analyses reducing the risk of over confidence in interpretation of results.

Keywords: Network meta-analysis, Single armed studies, Evidence synthesis, Relapsed or refractory myeloma

* Correspondence: susanne.schmitz@lih.lu

¹Department of Population Health, Luxembourg Institute of Health, Strassen, Luxembourg

Full list of author information is available at the end of the article



Background

Network meta-analysis (NMA) has become increasingly popular among both clinicians and policy makers as a tool to assess the evidence for new technologies relative to all available comparator treatments [1]. The technique allows researchers to estimate the comparative effectiveness of treatments that have not been studied in head to head trials. However, relative treatment effects for all interventions of interest can only be derived where it is possible to establish a viable, connected network (see Lu and Ades for an introduction [2]). Unfortunately, it is often challenging to find high quality evidence (e.g. RCT) for all potentially relevant treatments of interest, and as a result evidence networks may be partial or incomplete.

One option is to conclude that evidence is insufficient to make a judgement on relative treatment effects. Often, however, a decision on reimbursement or treatment choice is required and cannot be postponed. One could rely on clinical judgement to inform the comparative effects, as has been done in the past, however, additional uncertainty is not being accounted for [3]. Recently, novel methods have been proposed as a means of incorporating evidence from observational studies or patient level data and thereby potentially overcoming some of the limitations described above. Hierarchical models have been proposed to systematically incorporate comparative observational evidence based on summary as well as individual patient level data [4–6]. Random main effects models allow for the incorporation of before-and-after studies, where access to patient level data is not a necessity [7]. An alternative is to simultaneously synthesise multiple outcome measures and derive relative effects through a chain of evidence [8]. Complex methods such as propensity scoring or matching adjusted indirect comparison make use of individual patient level data to create a comparison adjusting for measured covariates [9–13]. The choice of method depends on the data available. RCTs continue to be the gold standard of evidence. Analyses based on individual patient level data allow for the adjustment of observed covariates; however, individual patient level data is quite often unavailable. Analyses based on summary data are prone to bias and need to be interpreted with great care.

Multiple myeloma (MM) is the second most common form of blood cancer with an age-adjusted incidence of six per 100,000 per year in the USA and Europe [14, 15]. Initial treatment options for MM typically involve corticosteroids in combination with other drugs including alkylating chemotherapeutic agents and novel biological drugs, with or without hematopoietic stem cell rescue [15, 16]. Several, novel biological drugs have demonstrated promising activity in treating MM including immunomodulatory drugs (e.g. thalidomide, lenalidomide and pomalidomide) and proteasome inhibitors (e.g.

bortezomib and carfilzomib). Yet there continues to be a substantial unmet clinical need, and at present there is no cure for MM with relapse remaining inevitable [17, 18]. Given the poor prognosis for relapsed and refractory MM (RRMM), there is an immediate demand to establish effective, evidence-based treatment approaches in this area of unmet clinical need. Currently, comprehensive comparative data between treatments and disease stages is lacking [19]. An assessment of clinical effectiveness across pharmacological treatments for RRMM is essential in order to establish how treatments for RRMM compare on outcomes.

There are a number of non-systematic reviews available which discuss the utility of available or emerging treatments for RRMM [17, 20, 21]. Previous systematic reviews have tended to focus on single drugs [22–25]; few considered survival outcomes and the clinical effectiveness of more than one drug intervention for RRMM. Lopuch et al. [26] used data from four RCTs to evaluate the safety and efficacy of targeted pharmacological interventions for RRMM, used as monotherapy or in combination with other drugs. Dranitsaris and Kuara offer an indirect comparison of lenalidomide and bortezomib specifically using data from three RCTs [27]. However, these papers are limited in scope and do not encompass the broad variety of active treatments available for RRMM.

More recently, three more comprehensive analyses were published. The Institute for Clinical and Economic Review report on treatments for RRMM presented a NMA comparing the relative effectiveness of seven interventions using data from randomised and single-arm studies [28]. Disconnected evidence was linked through a comparison of two key treatment regimens (bortezomib plus dexamethasone and bortezomib monotherapy) obtained from a retrospective matched pairs analysis [29]. Van Beurden-Tan and colleagues obtained relative effects for 18 treatment options under the assumption of equal efficacy of bortezomib plus dexamethasone and bortezomib monotherapy as well as thalidomide plus dexamethasone and thalidomide monotherapy [3]. Armoiry et al. have recently highlighted the disagreement between published matched pair analyses and the assumption of equal efficacy applied here [30]. Botta et al. obtained relative effects across the network by grouping regimens into nine groups [31]. An analysis of independent treatments is also provided, however, still assuming equal efficacy of bortezomib monotherapy and bortezomib plus dexamethasone as well as thalidomide, thalidomide plus dexamethasone and lenalidomide plus dexamethasone. None of these analyses incorporated the additional uncertainty introduced by making assumptions of equal efficacy or using estimates obtained through retrospective analysis.

The objective of this analysis is to fill the gap in RCT evidence by utilising additional information from observational evidence to obtain relative effect estimates of all treatments for RRMM, while capturing additional uncertainty to avoid over confidence in interpretation of results.

Methods

Literature search and data extraction

A systematic search of the published literature and relevant conference proceedings was conducted to identify eligible studies and is reported following PRISMA guidelines. The review protocol is published in Prospero (www.crd.york.ac.uk/PROSPERO/display_record.asp?ID=CRD42014013405). In August 2014, the first search was carried out in MEDLINE, EMBASE and the Cochrane Library's Central Register of Controlled Trials; the search was updated in January 2016 and February 2017 (RCTs only). Papers were first checked by title, and then underwent abstract review. Papers were required to be in English and were included if they presented (a) original studies, (b) clinical effectiveness of any (pharmacological) intervention for the treatment of RRMM, and (c) reported progression-free survival (PFS), overall survival (OS) or time to progression (TTP) as primary or secondary outcome. The analysis presented here focuses on median PFS, study details are therefore restricted to studies reporting this outcome. Phase I dose-escalation studies, studies focusing on patient samples with different or mixed treatment conditions, and studies presenting subgroup analysis of a dataset adopted from a main clinical trial were excluded. For RCTs, conference abstracts and presentations were excluded if a corresponding published paper was available or could be identified snowballing. Conference abstracts for observational studies were excluded as they were limited in intervention and outcome information and lacked evidence of scientific validation. The full electronic search strategy can be accessed in online under Additional file 1. The quality of trials included in the NMA was assessed using the Cochrane risk of bias tool from the Cochrane handbook for RCTs [32] (ÁM, JL) and an adapted Newcastle Ottawa Scale (NOS) for observational studies [33] (JL, NH). Three authors (ÁM, EH, VB) extracted data on population characteristics, intervention description, and outcome measures. Estimates of the relative effectiveness of treatments on the hazard ratio scale, along with a measure of precision (standard error) were extracted, as well as median time to event data for each trial arm.

Statistical analysis

RCT only analysis

In a first step, standard Bayesian NMA models were fitted to analyse RCT evidence only. NMA models provide a powerful method to synthesize data from multiple

trials and generate estimates of relative efficacy between treatments within connected networks of evidence, by combining direct and indirect evidence [34]. Indirect estimates rely on the assumption of transitivity and the use of relative effects ensures randomisation is preserved.

Based on median PFS data and patient numbers, the model estimated the relative efficacy for each pairwise comparison, measured as hazard ratios (HRs) assuming an exponential survival model.

For each arm k in study i , a binomial likelihood function is used to model the number of patients alive at median time to event $r_{i,k}$, out of a total number of patients included in the arm $n_{i,k}$.

$$r_{i,k} \sim \text{bin}(p_{i,k}, n_{i,k})$$

Based on the estimated survival probability $p_{i,k}$ the model estimates the log hazard $\log a_{i,k}$ using the median time to event $w_{i,k}$ and assuming an exponential survival function.

$$p_{i,k} = 1 - \exp(-w_{i,k} \cdot \exp(\log a_{i,k}))$$

Using standard NMA modelling, the model then estimates log hazard ratios compared to baseline treatments in each trial ($\delta_{i,k}$).

$$\log a_{i,1} = \mu_i + 0$$

$$\log a_{i,k} = \mu_i + \delta_{i,k} \quad , k \neq 1$$

PFS was chosen as the preferred outcome as it was most widely reported among the included trials. TTP was used where PFS was not reported. Since this paper focusses primarily on the methodology, no additional survival outcomes were considered. Median PFS was used in order to accommodate the incorporation of observational studies, the majority of which do not report HRs for survival outcomes. The model was fitted in WinBUGs using the R2Winbugs package in R [35, 36]. A Bayesian approach was taken using non-informative prior distributions. Fixed effects were assumed due to the limited amount of trials comparing the same two interventions. The WinBUGs code is available as Additional file 2.

Bayesian analyses capture uncertainty in the form of posterior distributions. We summarised outcomes as means and 95% credible intervals for hazard ratios. Further, we established a ranking of alternative treatments based on the surface under the cumulative ranking curve (SUCRA) score [37]. The SUCRA score is defined as the normalised area under the curve of the cumulative ranking plot, which shows, for every treatment, the probability of being the best, among the two best, among the top three treatments, etc. for the range of

available treatments. The SUCRA score ranges from 0 to 1, where 1 reflects the best treatment with no uncertainty and 0 reflects the worst treatment with no uncertainty.

Extending NMA with observational studies

RCT data in this analysis formed two disconnected treatment networks, making comparisons of treatments between networks impossible using standard techniques. The aim of incorporating observational data here is to strengthen the existing RCT data and assist in drawing comparisons across all treatment interventions.

The analysis limited the inclusion of observational studies to those investigating at least one intervention, which was part of the RCT network. This restriction resulted in the exclusion of all potentially relevant comparative observational studies, leaving only single armed studies for inclusion. In the absence of access to patient level data, single armed observational trials were matched to act as each other's control group based on covariate information. The inclusion of single armed studies was hence restricted to those reporting a complete covariate profile. Only studies investigating different interventions were considered as potential matched pairs.

A clinical expert in MM provided guidance for identifying and ranking covariates relevant for predicting treatment outcomes (MOD). Covariates selected in descending order of importance were: Frailty (defined by a composite of age, Charlson's comorbidity score (CCS) and activity daily score (ADS)); genetic risk profile, treatment history, baseline stage and gender. Age was used as surrogate for frailty, since CCS and ADS were not generally reported in the trials. Genetic risk profile information was also very rarely reported and therefore not included. Finally, we used treatment history (weight = 4, measured as the medium number of prior treatments; normalised assuming a range of 0–4 prior lines), age (weight = 3, measured as median age, normalised assuming a range of 20–80 as median age), baseline stage (weight = 2, measured as mean baseline stage, normalised assuming a range of 0–3) and gender (weight = 1, measured as the proportion of females in each study). The distance Δ_{tot} between any two studies j and k was determined as the weighted average of differences in covariates:

$$\Delta_{tot}[j, k] = \frac{\sum_{i=1}^4 w_i \cdot \Delta_i[j, k]}{\sum_{i=1}^4 w_i}$$

Where w_i refer to the weights given to individual covariates and $\Delta_i[j, k]$ represents the normalised difference between studies j and k in covariate i . A numerical

example illustrating the process is provided as Additional file 3. The distance takes a value between 0 and 1, where small values indicate more similar trials. There is no guidance available as to what is an adequate threshold for similarity; a distance of 0.1 was selected as the maximum distance allowable for matching study pairs. The impact of varying the threshold in this application is reported elsewhere [38]. As a further investigation into the appropriateness of the threshold we have compared the distance between observational studies to distances between and within RCTs.

A base case model was fitted including all matches connecting the separate networks using the same modelling approach as described above. Further, each match was investigated separately incorporating the RCT evidence above as well as each match in turn. Investigating the range of possible matches this way allows for the evaluation of variation associated with matched trial approaches.

We validated our method by comparing our analysis with estimates from previous inter network comparisons [3, 29, 31, 39].

Each NMA model discarded 50,000 burn-in iterations and was run with 100,000 iterations and three chains. Visual inspection of chains and autocorrelation plots confirmed convergence and the effective sample size was checked.

Results

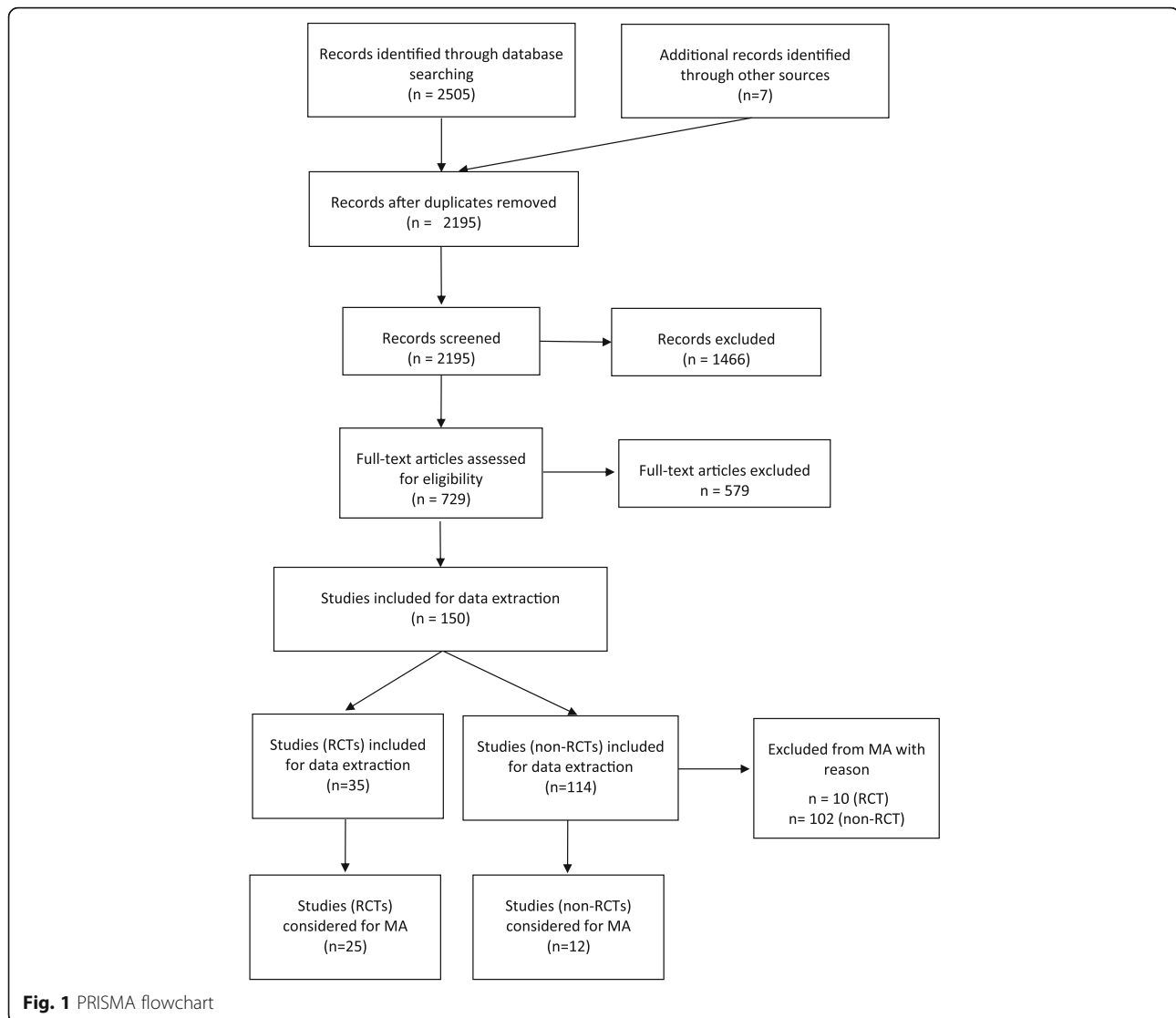
Study details

In total, 2505 papers were identified. After duplicates were removed, 2195 remaining titles and abstracts were screened for relevance. Of those, 1466 papers were excluded leading to 729 studies eligible for full-text reading. In total, 36 RCTs and 114 observational studies fulfilled the inclusion criteria and were used for data extraction. The PRISMA diagram is shown in Fig. 1. Excluding studies which did not report median PFS or TTP, studies investigating different doses or delivery methods of the same intervention, as well as observational studies investigating interventions not part of the RCT network or with incomplete covariate profile for single armed studies, resulted in 25 RCTs and 12 observational studies relevant for the analysis presented here. Reasons for exclusion of the remaining studies are presented in Additional file 4.

Demographic information on the trials included in the analysis is shown in Table 1; the evidence network based on RCT evidence is shown in Fig. 2.

Study quality

The RCTs were of mixed quality. Many studies were un-blinded, which created a high risk of bias. Additionally, the majority of studies failed to give sufficient



information regarding randomisation and allocation concealment to determine the risk of selection bias. In most cases attrition bias was treated appropriately, and only one study presented a high risk, while another presented unclear risk in this regard. All but one of the studies were subject to high risk of bias due to other factors not accounted for in the Cochrane tool, such as sponsor involvement in study design, data collection and analysis and writing, small sample size, and by being a conference abstract rather than a full text peer reviewed paper. The observational studies showed a low risk of bias, with no study scoring below 4 out of a possible 6 stars. Details on the bias assessment are provided as Additional file 5.

Analysis of RCTs only

Twenty-five RCTs investigating 25 separate treatment regimens were analysed. Of these regimens, 13 treatment

combinations are currently licensed in Europe. Since comparisons of these interventions may be of primary interest, we have highlighted these in our results.

The combined RCT evidence forms two separate evidence networks (Fig. 2). Since there was no trial investigating any of the treatment regimens from the larger white network with a treatment investigated in the smaller black network, no comparative estimates between treatments of separate networks can be obtained. The analysis was conducted separately for the white and the black network. Tables 2 and 3 shows the relative HRs and 95% credible intervals for each within network comparison.

The SUCRA score shown as the solid line in Fig. 3 provides an additional summary statistic of each treatment's overall ranking. Rankograms showing the probability of each intervention to be ranked best, second best etc. are shown in Additional file 6.

Table 1 Study characteristics of trials included in the analysis

Authors	Treatment	N	Median PFS (months)	Median Age (years)	Median number of previous lines	Mean baseline disease stage ^b	Female (%)
RCT trials							
Chanani-Khan et al. [48]	1. ob7mg + dex40mg 2. dex40mg	110	3.09	62	3	2.6	46
Chiou et al. [49]	1. thal100mg + IFN 2. thal100mg	114 16	3.55 1.5	63 ^c	1	NR	14
Dimopoulos et al. [50]	1. bor1.3 mg/m2 + vor400mg 2. bor1.3 mg/m2	12	7.9	62	2	1.9	41
Dimopoulos et al. [51]	1. len25mg + dex40mg 2. dex40mg	317 320	7.63 6.83	63	NR	2.6	41
Dimopoulos et al. [52]	1. carf20mg + dex20mg 2. bor1.3 mg/kg + dex20mg	176 175	11.3 4.7	65	2	1.8	51
Hjorth et al. [53]	1. thal50mg + dex40mg 2. bor1.3 mg/m2 + dex20mg	464 465	18.7 9.4	71	NR	NR	47
Kropff et al. [54]	1. dex40mg 2. thal100/200/400 mg ^a	67 64	9 7.2	64	1–3 prior lines	1.9	57
Kropff et al. [55]	1. bor1.3 mg/kg + dex20mg 2. bor1.3 mg/kg + dex20mg + cyc50mg	43 47	12.6 9.9	71	1	2.1	43 ^d
Lonial et al. [56]	1. elo10mg/kg + len25mg + dex40mg 2. len25mg + dex40mg	321 325	19.4 14.9	66	2	1.8	40.4 ^d
Moreau et al. [57]	1. ixa4mg + len25mg + dex40mg 2. len25mg + dex40mg	360 363	20.6 14.7	66	1	NR	43 ^d
Orlowski et al. [58]	1. sil6mg + bor1.3 mg/m2 + dex40mg 2. bor1.3 mg/m2 + dex40mg	142 144	8.1 7.6	62	1–3 prior lines	NR	NR
Orlowski et al. [59]	1. bor1.3 mg/m2 2. PLD20mg + bor1.3 mg/m2	322 324	6.5 9	61	NR	NR	44
Palumbo et al. [60]	1. elo10mg + bor1.3 mg/m2 + dex20mg 2. bor1.3 mg/m2 + dex20mg	77 75	9.9 6.8	66	1 ^d	NR	48 ^d
Richardson et al. [61]	1. pom4mg 2. pom4mg + dex40mg	108 113	2.7 4.2	63	5	2.6	46
Nagler et al. [62]	1. peri50mg + bor1.3 mg/m2 + dex20mg 2. bor1.3 mg/m2 + dex20mg	69 66	5.23 8.29	NR	1 ^d	NR	68

Table 1 Study characteristics of trials included in the analysis (Continued)

Authors	Treatment	N	Median PFS (months)	Median Age (years)	Median number of previous lines	Mean baseline disease stage ^b	Female (%)
Richardson et al. [63]	1. bor1.3 mg/m2 2. dex40mg	333	6.22	61	2	NR	42
San Miguel et al. [64]	1.pan20mg + bor1.3 mg/m2 + dex20mg 2. bor1.3 mg/m2 + dex20mg	336 387	3.49 12	63	1	1.8	47
San Miguel et al. [14]	1. pom4mg + dex40mg 2. dex40mg	381 302	8.1 4	64	5	2	41
Stewart et al. [65] [65]	1.carf20-17 mg + len25mg + dex40mg 2. len25mg + dex40mg	153 396	1.9 26.3	64	2	NR	44
Weber et al. [66]	1. len25mg + dex40mg 2. dex40mg	396 177	17.6 11.1	63	1-3 prior lines	2.5	40
White et al. [67]	1. bor1.3 mg/m2 2. bor1.3 mg/m2 + bev400mg	176 53	4.7 5.1	65	1-3 prior lines	2.1	42
Hou et al. [68]	1. ixa + len + dex 2. len + dex	49 57	6.2 6.7	NR	2	1.7	31
Dimopoulos et al. [69]	1. dara16mg/m2+ len25mg + dex40mg 2. len25mg + dex40mg	58 286	4.0 54.1	65	1	1.7	NR
Garderet et al. [70]	1. bor1.3 mg/m2 + thal200mg + dex40mg 2. thal200mg + dex40mg	283 135	18.4 18.3	61	1	1.6	37
Palumbo et al. [71]	1. dara 16 mg/m2 + bor1.3 mg/m2 + dex20 mg 2. bor1.3 mg/m2 + dex20 mg	134 251	13.6 18.5	64	2	1.8	43
247	7.2						
Observational trials							
Avet-Loiseau et al. [40]	dex40mg + len25mg	207	9.6	65	3	1.7	44
Chang et al. [41]	bor1.3 mg/m2	65	9.5	54	>=2	1.3	31
Fukushima et al. [72]	bor1.3 mg/m2 + dex20mg	22	16.8	69	2	2.1	41
Hou et al. [73]	dex20/40 mg + len25mg	199	8.3	60	4	2.8	47
Kneppers et al. [42]	dex40mg + len25mg	117	10	61	3.5	2.7	37
Lacy et al. [74]	dex40mg + pom2mg	34	4.8	62	4	1.7	32
Moore et al. [43]	bor1.3 mg/m2	52	13	72	1	2.6	40
Oehrlin et al. [75]	Dex < 160-480 mg Len10-25 mg	26	11.6	71	2	2.8	54

Table 1 Study characteristics of trials included in the analysis (Continued)

Authors	Treatment	N	Median PFS (months)	Median Age (years)	Median number of previous lines	Mean baseline disease stage ^b	Female (%)
Pantani et al. [76]	bor1.3 mg/m ² + dex20mg	85	8.7	58	2	2.4	40
Richardson et al. [77]	bor1.3 mg/m ² + dex40mg + pan20mg	55	5.4	61	4	1.9	47
Terpos et al. [78]	dex40mg + thal200mg	35	8	63	2	2.2	34
Walter-Croneck et al. [44]	bor1.3 mg/m ²	708	14	60	1	2.1	55

bev bevacizumab, *bor* bortezomib, *carf* carfilzomib, *cyc* cyclophosphamide, *dara* daratumumab, *dex* dexmethasone, *elo* elozumatab, *IFN* interferon alpha, *ixa* ixazomib, *len* lenalidomide, *ob* oblimersen, *pan* panobinostat, *peri* perfosine, *PLD* pegylated liposomal doxorubicin, *por* pomalidomide, *sil* siltuximab, *thal* thalidomide, *vor* vorinostat

^apooled results from 3 arms investigating different doses

^bestimated excluding patients with unknown baseline stage

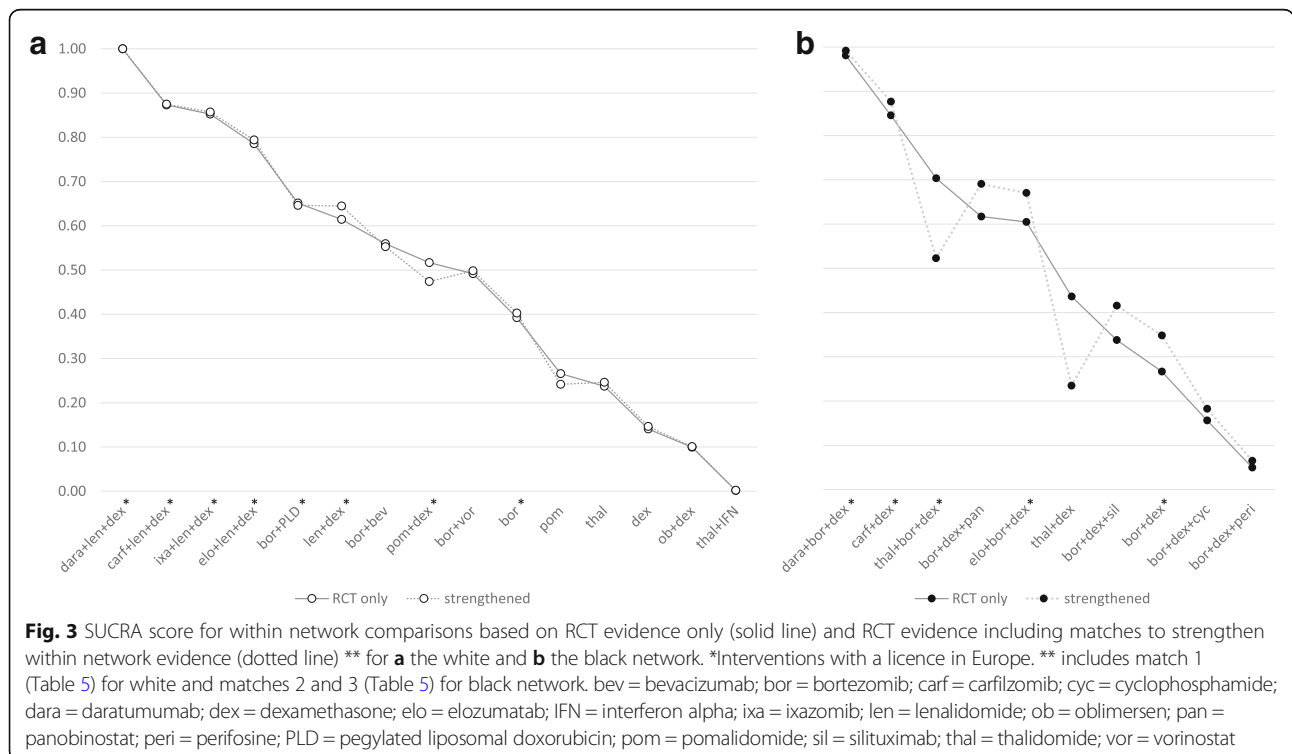
^cprobably not median but does not state exact method (presumably mean and SD)

^dmedian

Table 3 Hazard ratios of progression free survival and 95% credible intervals for within network comparisons based on RCT evidence only for the black network

	carf+dex	thal+bor+dex	elo+bor+dex	bor+dex+pan	thal+dex	bor+dex+sil	bor+dex	bor+dex+cyc	bor+dex+peri
dara+bor+dex	0.77 (0.56,1.06)	0.64 (0.33,1.21)	0.57 (0.41,0.79)	0.57 (0.34,0.96)	0.48 (0.27,0.82)	0.41 (0.27,0.64)	0.39 (0.30,0.50)	0.31 (0.16,0.59)	0.25 (0.14,0.43)
carf+dex		0.82 (0.44,1.55)	0.74 (0.56,0.98)	0.74 (0.45,1.20)	0.62 (0.36,1.03)	0.54 (0.36,0.79)	0.50 (0.42,0.61)	0.40 (0.21,0.75)	0.32 (0.19,0.55)
thal+bor+dex			0.90 (0.48,1.67)	0.89 (0.42,1.92)	0.75 (0.53,1.06)	0.65 (0.32,1.27)	0.61 (0.33,1.12)	0.49 (0.21,1.14)	0.39 (0.18,0.87)
elo+bor+dex				0.99 (0.61,1.64)	0.84 (0.49,1.41)	0.73 (0.49,1.07)	0.68 (0.55,0.83)	0.54 (0.28,1.03)	0.44 (0.26,0.74)
bor+dex+pan					0.84 (0.42,1.64)	0.73 (0.42,1.29)	0.68 (0.43,1.07)	0.54 (0.25,1.16)	0.44 (0.22,0.87)
thal+dex						0.87 (0.47,1.57)	0.82 (0.50,1.34)	0.65 (0.30,1.42)	0.52 (0.27,1.09)
bor+dex+sil							0.94 (0.67,1.32)	0.75 (0.37,1.50)	0.60 (0.33,1.09)
bor+dex								0.80 (0.43,1.45)	0.64 (0.39,1.04)
bor+dex+cyc									0.81 (0.37,1.76)

Licensed treatments and comparisons between those are highlighted in grey. Significant differences on the 95% credible level are in bold. *bev* bevacizumab, *bor* bortezomib, *carf* carfilzomib, *cyc* cyclophosphamide, *dara* daratumumab, *dex* dexamethasone, *elo* elozumatab, *IFN* interferon alpha, *ixa* ixazomib, *len* lenalidomide, *ob* oblimersen, *pan* panobinostat, *peri* perifosine, *PLD* pegylated liposomal doxorubicin, *pom* pomalidomide, *sil* silituximab, *thal* thalidomide, *vor* vorinostat



Dara+len + dex was estimated to be the best treatment in the white network with respect to PFS, showing a significant improvement (using the 95% credible intervals) compared to all other treatments in the network. This combination was followed by the other triple combinations (carf, ixa and elo in combination with len + dex), among which no significant differences were observed, which did however, show significant improvements compared to other licensed treatments with the exception of bor + PLD. Lowest efficacy was shown by five unlicensed regimens (pom, thal, dex, ob + dex, thal+IFN), which have shown significantly lower efficacy compared to all licensed interventions (with the exception of bor versus pom). Pom + dex and bor appeared the worst ranked licensed treatments, showing no significant difference to non-licensed regimens bor + bev and bor + vor.

Dara+bor + dex was estimated to be the most efficacious treatment regimen in the black network showing a significant improvement over the remaining treatments except for carf+dex and thal+bor + dex. Three of the other licensed treatments follow (carf+dex, thal+bor + dex and bor + dex + pan), as well as elo + bor + dex with similar efficacy to bor + dex + pan. Lowest efficacy was shown by two unlicensed regimens (bor + dex + peri and bor + dex + cyc). No significant difference was found between the licenced combination bor + dex and any of the unlicensed regimens.

The rank analysis showed an increased uncertainty of bor + bev compared to other treatments in the larger white network (see figure (b) of Additional file 6). This increased uncertainty is likely due to its connection through relatively small trials to the remaining regimens. Similar effects were observed in the black network for a number of regimens.

Due to the disconnected overall network, it is not possible to draw any conclusion on between network comparisons based on RCT evidence alone.

Analysis of RCTs plus observational studies

After removing trials not reporting the relevant outcome measure or investigating interventions not part of the RCT network, only single armed evidence was left for inclusion. Twelve of these studies provided a full covariate profile and were considered for matching. Table 1 summarises the outcomes and baseline characteristics of these studies. Restricting combinations to matches between trials investigating different treatment regimens, there were a total of 56 possible matches. A distance metric incorporating median age, median number of prior treatment lines, mean baseline stage and proportion of females was calculated for each possible match; results are shown in Table 4.

A distance threshold of 0.1 was applied for the base case analysis, and this resulted in the exploration of 14%

Table 4 Distance metric between observational studies

	Dex+Len [40]	Bor [41]	Bor+Dex [42]	Dex+Len [43]	Dex+Len [44]	Dex+Pom [45]	Bor [46]	Dex+Len [47]	Bor+Dex [48] Bor+Dex+Pan [49]	Dex+Thal [50]	Bor [51]	
Dex+Len [40]		0.131	0.145			0.123	0.290		0.177	0.131	0.151	0.256
Bor [41]			0.170	0.289	0.226	0.208		0.237	0.147	0.232	0.147	
Bor+Dex [42]				0.286	0.224	0.262	0.146	0.067	0.249	0.036	0.148	
Dex+Len [43]						0.096	0.365		0.241	0.064	0.264	0.355
Dex+Len [44]						0.125	0.301		0.184	0.113	0.194	0.312
Dex+Pom [45]							0.406	0.329	0.270	0.032	0.239	0.357
Bor [46]								0.131	0.166	0.395	0.166	
Dex+Len [71]									0.089	0.305	0.090	0.189
Bor+Dex [48]										0.252	0.038	0.143
Bor+Dex+Pan [49]											0.241	0.325
Dex+Thal [50]												0.139
Bor [51]												

Matches of within network pairs are shaded in grey. Pairs explored at a threshold of 0.1 are bold and underlined
 bev bevacizumab, bor bortezomib, carf carfilzomib, cyc cyclophosphamide, dara daratumumab, dex dexamethasone, elo elozumatab, IFN interferon alpha, ixa ixazomib, len lenalidomide, ob oblimersen, pan panobinostat, peri perifosine, PLD pegylated liposomal doxorubicin, pom pomalidomide, sil siltuximab, thal thalidomide, vor vorinostat

($n = 8$) of possible matches, which are underlined and marked in bold in Table 4. Table 5 summarises these 8 matched studies included in the analysis.

Five studies had no matched pair below the threshold and were not included in the base case [40–44]. Of the eight matches explored, one strengthens the within white network evidence, two the within black network evidence and five matches connect both networks allowing for a comparison between all treatment regimens. The evidence network including these 8 matches is shown in Fig. 4.

We first explored the impact of including matches strengthening the within network evidence (match 1 for white and matches 2 and 3 for black network (Table 5)), matches connecting both networks are explored in a second step.

The grey dotted line in Fig. 3 shows the SUCRA score of the first step. The impact of adding a match connecting len + dex and pom + dex in the white network is minimal indicating that the evidence added does not contradict the RCT evidence. Due to network properties, adding matches for the comparative effect of bor + dex and dex + thal only affects the relative effects of these regimens as well as bor + dex + thal. The ranking shows a decrease in SUCRA score for bor + dex + thal as well as dex + thal; however, one should note that the reordering in the ranking only affects interventions between which no significant difference was observed.

The second step analysed the matches connecting both networks. A model incorporating all five connecting matches was fitted as well as five models investigating each match in turn.

The relative HRs and 95% credible intervals of comparisons between treatments licensed in Europe based

on the model incorporating all five connections is displayed in Table 6, the SUCRA plot is shown in Fig. 5. All pairwise comparisons including those of unlicensed treatments can be found as Additional file 7.

Dara+len + dex is estimated the most efficacious treatment showing significant improvement compared to all other licensed interventions. Dara+bor + dex, carf+len + dex, ixa + len + dex, elo + len + dex and carf+dex follow, showing no significant differences between each other. With the exception of carf+dex, these treatments show superiority over the remaining strategies, with the exception of thal+bor + dex. Pom + dex, bor and bor + dex show the least efficacy of all licensed treatments and no significant differences among each other. In the ranking of all investigated interventions, eight of the licensed interventions show the highest efficacy and none of the unlicensed strategies show a significant improvement over any of the licensed strategies. However, some of the unlicensed strategies such as elo + bor + dex or bor + bev appear to have similar effects to many licensed treatment pathways.

The SUCRA score of licensed treatments of all scenarios individually are shown as Additional file 8. While the relative ranking of treatments within each network remains unchanged, considerable variation on inter-network comparisons is observed. However, dara+len + dex remains best or second-best treatment strategy in all scenarios (dara+len + dex is exceeded by dara+bor + dex in match 8). Dara+bor + dex also remains in the top 5 treatment strategies in all scenarios. The triple combinations with len + dex are also ranked in the top 5, except for scenario 5, where carf+dex, and triple combinations with bor + dex are ranked higher.

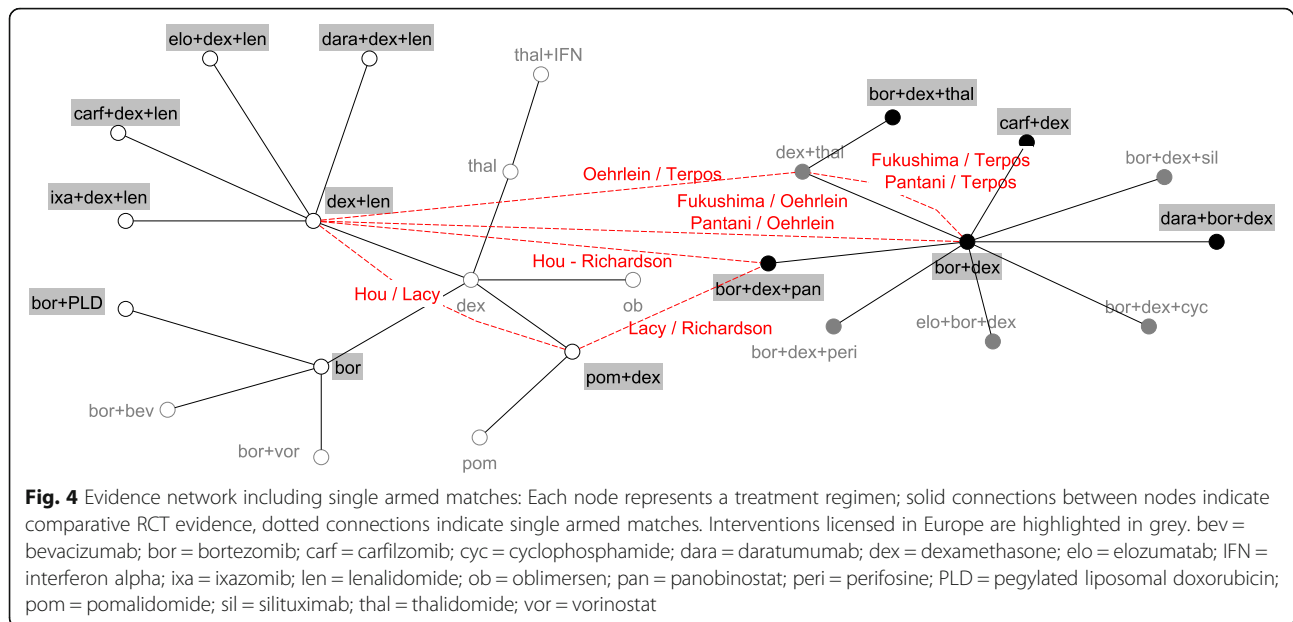
Table 5 Matches included in base case analysis

ID	Match 1	Match 2	Drug 1	Drug 2	PFS 1 ^a	PFS 2 ^a	HR ^b
Within white network							
1	Hou et al. [73]	Lacy et al. [74]	dex + len	dex + pom	8.3	4.8	0.58
Within black network							
2	Fukushima et al. [72]	Terpos et al. [78]	bor + dex	dex + thal	16.8	8	0.48
3	Pantani et al. [76]	Terpos et al. [78]	bor + dex	dex + thal	8.7	8	0.92
Connecting both networks							
4	Hou et al. [73]	Richardson et al. [77]	dex + len	bor + dex + pan	8.3	5.4	0.65
5	Lacy et al. [74]	Richardson et al. [77]	dex + pom	bor + dex + pan	4.8	5.4	1.13
6	Oehrlein et al. [75]	Pantani et al. [76]	dex + len	bor + dex	11.6	8.7	0.75
7	Oehrlein et al. [75]	Terpos et al. [78]	dex + len	dex + thal	11.6	8	0.69
8	Fukushima et al. [72]	Oehrlein et al. [75]	bor + dex	dex + len	16.8	11.6	0.69

bev bevacizumab, bor bortezomib, carf carfilzomib, cyc cyclophosphamide, dara daratumumab, dex dexamethasone, elo elozumatab, IFN interferon alpha, ixa ixazomib, len lenalidomide, ob oblimersen, pan panobinostat, peri perifosine, PLD pegylated liposomal doxorubicin, pom pomalidomide, sil silituximab, thal thalidomide, vor vorinostat, HR hazard ratio, PFS progression free survival

^amedian

^bestimated from median PFS assuming exponential survival



To validate our analysis we compared our outcomes with those of existing inter network comparisons (see outcomes summarised in Table 7). While no gold standard exists, two analyses based on individual patient level data have estimated the relative effect between bor + dex and bor with respect to PFS [29, 39] representing the currently best available evidence. Two recent NMAs made assumptions based on clinical opinion on the same comparison. None of the studies significantly favours either strategy. The two NMAs assume equal efficacy of both interventions, while both individual patient level data studies show a tendency favouring bor + dex. While the point estimate in our study favours bor, there is a large overlap in the confidence intervals. Further, our analysis shows the highest variance in the estimate, which is appropriate given the risk of matching single armed studies, especially based on summary data.

The sensitivity of choice of threshold has been evaluated for this application previously [38]. The analysis investigated the trade-off between strict thresholds, which would reduce the number of matches explored and therefore potentially underestimate the uncertainty, and high thresholds, which may include matches of trials with very different patient populations. A threshold of 0.1 appeared to explore a reasonable level of uncertainty. In addition, we analysed the similarity between arms within RCT trials using the same metric. The analysis was restricted to those studies which report a full covariate profile for each arm. Results indicate that different arms of the same study have an average distance of 0.01 ranging from 0.00 to 0.03. This indicates that a threshold of 0.1 allows for the inclusion of matched pairs which

are less similar compared to different arms within an RCT. Only match 5 would be considered if a threshold in line with the distances observed within RCT studies was applied.

Discussion

The purpose of this analysis was to illustrate how observational data can be used to link otherwise disconnected evidence networks and aid the estimation of relative effectiveness between treatments, which would not be possible otherwise, while acknowledging and communicating the additional uncertainty associated with such an approach.

Clinical research into pharmacological interventions for RRMM is a vast and growing field. The large number of treatment regimens explored over the years form a complex evidence structure, for which standard methods for evidence synthesis fail to produce estimates of relative efficacy between all treatments.

Previous analyses have attempted to solve the problem of disconnected networks by grouping regimens and assuming equal efficacy for each group [3, 31]. While this approach allows for the estimation of relative effects across the entire evidence base, the uncertainty associated with the assumption is not incorporated. Since grouping is done with the aim of connecting disconnected networks, there is likely no clinical evidence supporting equal efficacy for these interventions. Communicating results without incorporating additional layers of uncertainty bears the risk of overconfident interpretation of results. Two studies have used individual patient level data to obtain the relative effects between bor and bor + dex [29, 39]. While such analysis can only

Table 6 Pairwise hazard ratios and 95% credible intervals of interventions licensed in Europe based on RCT evidence as well as all 5 matches connecting the separate networks satisfying the similarity threshold

	dara+bor + dex	carf+len + dex	ixa + len + dex	elo + len + dex	carf+dex	bor + PLD	len + dex	thal+bor + dex	bor + dex + pan	pom + dex	bor	bor + dex
dara+len + dex	0.56 (0.35,0.87)	0.51 (0.37,0.70)	0.49 (0.36,0.67)	0.44 (0.32,0.62)	0.43 (0.28,0.65)	0.35 (0.22,0.53)	0.34 (0.27,0.43)	0.33 (0.18,0.62)	0.30 (0.20,0.44)	0.29 (0.19,0.42)	0.25 (0.17,0.37)	0.22 (0.15,0.32)
dara+bor + dex		0.91 (0.58,1.42)	0.88 (0.56,1.36)	0.80 (0.50, 1.24)	0.77 (0.56,1.06)	0.62 (0.37,1.06)	0.61 (0.40,0.90)	0.60 (0.33,1.08)	0.54 (0.39,0.74)	0.52 (0.32,0.83)	0.45 (0.28,0.72)	0.39 (0.30,0.50)
carf+len + dex			0.97 (0.73,1.27)	0.87 (0.64,1.18)	0.85 (0.56,1.29)	0.68 (0.44,1.04)	0.67 (0.55,0.82)	0.66 (0.35,1.20)	0.59 (0.41,0.85)	0.57 (0.39,0.83)	0.49 (0.34,0.71)	0.43 (0.29,0.61)
ixa + len + dex				0.90 (0.67,1.22)	0.88 (0.58,1.30)	0.70 (0.47,1.07)	0.69 (0.57,0.84)	0.68 (0.37,1.24)	0.61 (0.43,0.87)	0.59 (0.41,0.85)	0.51 (0.36,0.72)	0.44 (0.31,0.63)
elo + len + dex					0.97 (0.63,1.50)	0.78 (0.51,1.22)	0.77 (0.61,0.96)	0.75 (0.41,1.39)	0.68 (0.47,0.99)	0.65 (0.44,0.96)	0.56 (0.39,0.82)	0.49 (0.33,0.72)
carf+dex						0.80 (0.49,1.32)	0.79 (0.55,1.13)	0.78 (0.44,1.37)	0.70 (0.53,0.91)	0.67 (0.43,1.06)	0.58 (0.37,0.79)	0.50 (0.42,0.60)
bor + PLD							0.98 (0.68,1.42)	0.97 (0.49,1.89)	0.87 (0.55,1.37)	0.83 (0.56,1.24)	0.72 (0.58,0.91)	0.63 (0.39,0.99)
len + dex								0.98 (0.55,1.74)	0.88 (0.66,1.20)	0.85 (0.62,1.16)	0.74 (0.55,0.99)	0.64 (0.47,0.86)
thal+bor + dex									0.90 (0.51,1.60)	0.86 (0.46,1.63)	0.75 (0.40,1.43)	0.65 (0.38,1.12)
bor + dex + pan										0.96 (0.66,1.42)	0.83 (0.55,1.23)	0.72 (0.60,0.88)
pom + dex											0.87 (0.62,1.20)	0.75 (0.50,1.11)
bor												0.87 (0.58,1.30)

bev bevacizumab, bor bortezomib, carf caftarizomib, cyc cyclophosphamide, dara daratumumab, dex dexamethasone, elo elozumatab, ifn interferon alpha, ixa ixazomib, len lenalidomide, ob oblimersen, pan panobinostat, peri perifosine, PLD pegylated liposomal doxorubicin, pom pomalidomide, sil siltuximab, Thal thalidomide, vor vorinostat

Significant results on the 95% level are marked in italic

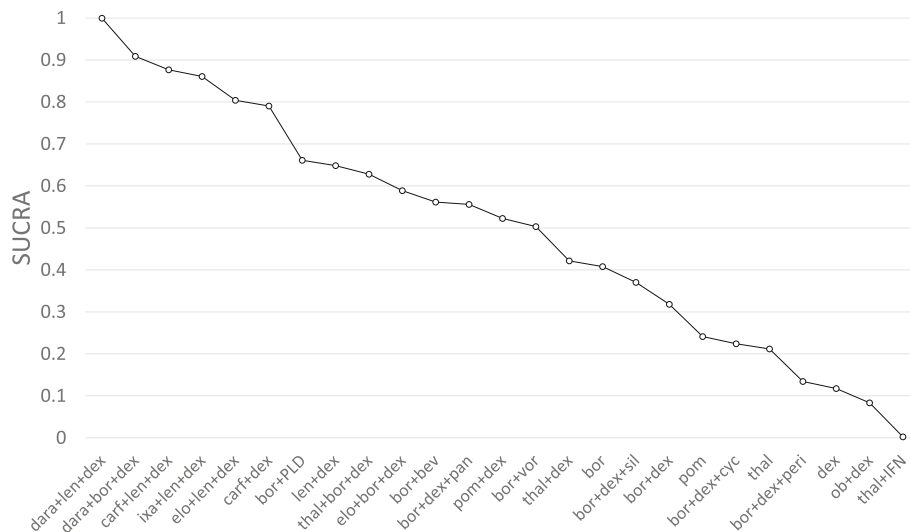


Fig. 5 SUCRA scores of analyses connecting separate networks of evidence. Shows ranking of model including all connecting matches simultaneously as well as models investigating each match individually. bev = bevacizumab; bor = bortezomib; carf = carfilzomib; cyc = cyclophosphamide; dara = daratumumab; dex = dexamethasone; elo = elozumatab; IFN = interferon alpha; ixa = ixazomib; len = lenalidomide; ob = oblimersen; pan = panobinostat; peri = perifosine; PLD = pegylated liposomal doxorubicin; pom = pomalidomide; sil = silituximab; thal = thalidomide; vor = vorinostat

account for observed covariates, such analyses provide the best available evidence in the absence of RCT evidence.

In the absence of individual patient level data, we propose the use of study level data to match single armed trials to fill the gap in RCT evidence.

Optimal matching based on summary data is not new, see for example the work of Rosenbaum [45]; Jaff et al. provides a recent example of optimal matching in peripheral artery disease [46]. Since matching based on study level data is prone to bias, capturing uncertainty is key. The selection of one optimal match may underestimate the uncertainty associated with the methodology. We therefore explored the space of possible matches and the impact different matches have on the results. While general agreement between scenarios can be observed (higher ranked treatment in either network remain among the higher ranked treatments overall), considerable variation in the rank distribution is observed nevertheless. This variation is translated into an

increased variance of estimates of relative effect between both networks.

The focus of this article is the methodology applied; the HRs reported in the results should not be interpreted as hard point estimates. Our analysis indicates that triple combinations with daratumumab as well as triple combinations with len + dex provide the highest efficacy relative to remaining treatments, with respect to PFS. Thal+IFN shows least effects throughout all scenarios.

Limitations

Median PFS was used to compare all treatment regimens, reflecting the outcome most widely reported across studies. Analyses of other outcomes, such as overall survival may have produced different results and further research should consider additional outcomes of interest.

Observational studies identified in the initial search varied in methods, from study design through to outcome reporting, and ultimately only 12 studies were considered to supplement RCT evidence. Matching based on study level information is prone to bias, making appropriate capturing of uncertainty highly important. There is no guidance on how similar is “similar enough”. Using a low threshold may result in the underestimation of uncertainty, while a high threshold may result in matching trials too dissimilar to provide useful comparisons. While a threshold of 0.1 appears to provide a reasonable exploration of the associated uncertainty, it is worth noting that differences within RCTs are much lower. Using the same approach, we have calculated the distance between arms within RCTs included

Table 7 Estimated Mean Hazard Ratio and 95% confidence interval of bor + dex versus bor comparison in different studies

	HR bor + dex versus bor
Dimopoulos 2010 [39]	0.73 (0.52,1.03)*
Dimopoulos 2014 [29]	0.60 (0.35,1.01)
Botta [31]	1 (-)
Van Beurden-Tan [3]	1 (-)
Matched analysis	1.15 (0.77,1.74)

bor bortezomib, dex dexamethasone, HR hazard ratio

*confidence interval estimated using *p*-value

in this analysis (where data was available) and the maximum distance observed was 0.03.

We only allowed for matching observational studies with each other to avoid interfering with the RCTs (either by duplicating an arm or inserting an extra arm). Alternative to matching single armed observational evidence with each other, we could have matched observational studies directly to RCTs or connect RCTs with each other [7, 47]. The distance metric indicates similar differences for all approaches (average distance 0.17 (range 0.01–0.48) within RCTs, 0.19 (range 0.02, 0.47) RCT to observational, 0.20 (range 0.03, 0.47) within observational); however, considering a larger space of matches may improve the analysis of variation.

Conclusions

Where RCT evidence alone results in a disconnected evidence structure, additional information can often be obtained from observational evidence. This paper presents a novel approach to establish a ranking of available treatment regimens in disconnected evidence networks through the incorporation of observational studies, taking into account the associated uncertainty of matching single armed trials. Applying this method to RRMM, we present the relative efficacy of available treatment regimens, which is not possible to obtain using standard methods.

Additional files

Additional file 1: Search strategy. Details the search strategy applied for the systematic review. (PDF 1100 kb)

Additional file 2: WinBUGs code. Contains WinBUGs code and input data for the analysis. (PDF 1103 kb)

Additional file 3: Numerical example. Shows a numerical example illustrating the calculation of the distance measure between single armed studies. (PDF 1101 kb)

Additional file 4: Reason for exclusion. Details the reason for excluding studies in the quantitative analysis. (PDF 1102 kb)

Additional file 5: Quality assessment. Shows the quality assessment of RCTs and observational studies included in the analysis. (PDF 1103 kb)

Additional file 6: Rankogram. Shows the rankograms for the white and the black network of the RCT only analysis. (PDF 1103 kb)

Additional file 7: All pairwise comparisons. Table containing hazard ratios and 95% credible intervals of all pairwise comparisons in the combined analysis. (PDF 1100 kb)

Additional file 8: SUCRA all scenarios. SUCRA ranking score of all licensed treatments of individual matches connecting both networks as well as the base case scenario containing all matches. (PDF 1100 kb)

Abbreviations

ADS: Activity daily score; bev: Bevacizumab; bor: Bortezomib; carf: Carfilzomib; CCS: Charlson's comorbidity score; cyc: Cyclophosphamide; dex: Dexamethasone; elo: Elozumatab; HR: Hazard ratios; IFN: Interferon alpha; ixa: Ixazomib; len: Lenalidomide; MM: Multiple myeloma; NMA: Network meta analysis; NOS: Newcastle Ottawa Scale; ob: Oblimersen; OS: Overall survival; pan: Panobinostat; peri: Perifosine; PFS: Progression free survival; PLD: Pegylated liposomal doxorubicin; RCTs: Randomised control trials; RRMM: Relapsed and

refractory multiple myeloma; sil: Silituximab; SUCRA: Surface under the cumulative ranking curve; thal: Thalidomide; TTP: Time to progression; vor: Vorinostat

Acknowledgements

The authors would like to thank the reviewers for their useful comments, which have helped to make significant improvements to this article.

Funding

Financial support for this research was provided by Celgene. However, Celgene had no input into the data selection, analysis design and interpretation of results.

Availability of data and materials

Additional material is available as supplementary files including the search strategy, WinBUGs code and data, a numerical example of weight calculations as well as a number of result summaries. The material is referred to throughout the manuscript.

Authors' contributions

SS and CW led the methodological conception and design of the study. SS conducted all statistical analyses. AM led the systematic review and data extraction. SS and AM contributed equally to the writing of the manuscript. JM supervised the progression of the study and provided significant input to the design of the literature review, interpretation of outcomes and several drafts of the manuscript. KR provided academic supervision and management in the early stages of the project. EH led the systematic review in its initial stages and created the data extraction sheet. IK provided significant methodological support in the design and execution of the systematic literature search. JL contributed to the statistical analysis, bias assessment and reviewed and commented on several drafts of the manuscript. NH contributed to the bias assessment and made significant contributions to several drafts of the manuscript. AK developed the initial data extraction tool and provided guidance on bias assessment. JB was provided initial statistical analyses for RCT data. VB updated the literature review. MOD and GC provided medical expertise for the systematic review, the matching algorithm and the manuscript drafting. All authors approved the final version of the manuscript.

Ethics approval and consent to participate

Not applicable.

Competing interests

Financial support for this research was provided by Celgene. However, Celgene had no input into the data selection, analysis design and interpretation of results.

Publisher's Note

Springer Nature remains neutral with regard to jurisdictional claims in published maps and institutional affiliations.

Author details

¹Department of Population Health, Luxembourg Institute of Health, Strassen, Luxembourg. ²Department of Psychiatry, Trinity College Dublin, Dublin, Ireland. ³Department of Psychology, University of Cambridge, Cambridge, UK. ⁴Cogentia Healthcare Consulting, Cambridge, UK. ⁵Department of Psychology, University of Zurich, Zürich, Switzerland. ⁶University Library: Medical Library, University of Cambridge, Cambridge, UK. ⁷Department of Computer Science and Statistics, Trinity College Dublin, Dublin, Ireland. ⁸University of Exeter, Exeter, UK. ⁹School of Social and Community Medicine, University of Bristol, Bristol, UK. ¹⁰Department of Medicine, NUI Galway, Galway, Ireland. ¹¹Professor of Haematology & Myeloma Studies, Clinical Director NIHR MIC-DEL, St James's University Hospital, Leeds, England. ¹²Health Research Institute, University of Limerick, Limerick, Ireland. ¹³Department of Health Policy & Management, Mailman School of Public Health, Columbia University, New York, USA.

Received: 11 July 2017 Accepted: 9 May 2018

Published online: 28 June 2018

References

- Dias S, et al. NICE DSU technical support document 2: a generalised linear modelling framework for pairwise and network meta-analysis of randomised controlled trials. 2011.
- Lu G, Ades A. Combination of direct and indirect evidence in mixed treatment comparisons. *Stat Med*. 2004;23(20):3105–24.
- van Beurden-Tan CH, et al. Systematic literature review and network meta-analysis of treatment outcomes in relapsed and/or refractory multiple myeloma. *J Clin Oncol*. 2017;35(12):1312–9.
- Schmitz S, Adams R, Walsh C. Incorporating data from various trial designs into a mixed treatment comparison model. *Stat Med*. 2013;32(17):2935–49.
- Saramago P, et al. Mixed treatment comparisons using aggregate and individual participant level data. *Stat Med*. 2012;31(28):3516–36.
- Prevost TC, Abrams KR, Jones DR. Hierarchical models in generalized synthesis of evidence: an example based on studies of breast cancer screening. *Stat Med*. 2000;19(24):3359–76.
- Thom HH, et al. Network meta-analysis combining individual patient and aggregate data from a mixture of study designs with an application to pulmonary arterial hypertension. *BMC Med Res Methodol*. 2015;15(1):34.
- Ades A. A chain of evidence with mixed comparisons: models for multi-parameter synthesis and consistency of evidence. *Stat Med*. 2003;22(19):2995–3016.
- Rosenbaum PR, Rubin DB. The central role of the propensity score in observational studies for causal effects. *Biometrika*. 1983;70(1):41–55.
- Caliendo M, Kopeinig S. Some practical guidance for the implementation of propensity score matching. *J Econ Surv*. 2008;22(1):31–72.
- d'Agostino RB. Tutorial in biostatistics: propensity score methods for bias reduction in the comparison of a treatment to a non-randomized control group. *Stat Med*. 1998;17(19):2265–81.
- Signorovitch JE, et al. Matching-adjusted indirect comparisons: a new tool for timely comparative effectiveness research. *Value Health*. 2012;15(6):940–7.
- Signorovitch JE, et al. Comparative effectiveness without head-to-head trials. *Pharmacoeconomics*. 2010;28(10):935–45.
- San Miguel J, et al. Pomalidomide plus low-dose dexamethasone versus high-dose dexamethasone alone for patients with relapsed and refractory multiple myeloma (MM-003): a randomised, open-label, phase 3 trial. *Lancet Oncol*. 2013;14(11):1055–66.
- Röllig C, Knop S, Bornhäuser M. Multiple myeloma. *Lancet*. 2015;385(9983):2197–208.
- Kumar SK, et al. Risk of progression and survival in multiple myeloma relapsing after therapy with IMiDs and bortezomib: a multicenter international myeloma working group study. *Leukemia*. 2012;26(1):149.
- Kyle RA, Rajkumar SV. Treatment of multiple myeloma: a comprehensive review. *Clin Lymphoma Myeloma*. 2009;9(4):278–88.
- Richardson P, et al. The treatment of relapsed and refractory multiple myeloma. *ASH Education Program Book*. 2007;2007(1):317–23.
- Ruggeri K, et al. Estimating the relative effectiveness of treatments in relapsed/refractory multiple myeloma through a systematic review and network meta-analysis. *Am Soc Hematology*. 2015;126:2103.
- Castelli R, et al. Current and emerging treatment options for patients with relapsed myeloma. *Clin Med Insights Oncol*. 2013;7:209.
- Mariz JM, Esteves GV. Review of therapy for relapsed/refractory multiple myeloma: focus on lenalidomide. *Curr Opin Oncol*. 2012;24:53–512.
- Dimopoulos MA, San-Miguel JF, Anderson KC. Emerging therapies for the treatment of relapsed or refractory multiple myeloma. *Eur J Haematol*. 2011;86(1):1–15.
- Knopf KB, et al. Meta-analysis of the efficacy and safety of bortezomib retreatment in patients with multiple myeloma. *Clin Lymphoma Myeloma Leuk*. 2014;14(5):380–8.
- Lilienfeld-Toal V, et al. A systematic review of phase II trials of thalidomide/dexamethasone combination therapy in patients with relapsed or refractory multiple myeloma. *Eur J Haematol*. 2008;81(4):247–52.
- Wang Y, Yang F, Shen Y, Zhang W, Wang J, Chang VT, Andersson BS, Qazilbash MH, Champlin RE, Berenson JR, Guan X, Wang ML. Maintenance Therapy With Immunomodulatory Drugs in Multiple Myeloma: A Meta-Analysis and Systematic Review. *JNCI*. 2016;108(3):djv342. <https://doi.org/10.1093/jnci/djv342>
- Łopuch S, Kawalec P, Wiśniewska N. Effectiveness of targeted therapy as monotherapy or combined therapy in patients with relapsed or refractory multiple myeloma: a systematic review and meta-analysis. *Hematology*. 2015;20(1):1–10.
- Dranitsaris G, Kaura S. Lenalidomide versus bortezomib: an indirect comparison. *Int J Hematol Oncol*. 2014;3(2):131–6.
- Ollendorf D, Chapman R, Khan S. Treatment Options for Relapsed or Refractory Multiple Myeloma: Effectiveness, Value, and Value-Based Price Benchmarks. Boston: Institute for Clinical and Economic Review; 2016.
- Dimopoulos MA, et al. Retrospective matched-pairs analysis of bortezomib plus dexamethasone versus bortezomib monotherapy in relapsed multiple myeloma. *Haematologica*. 2014; <https://doi.org/10.3324/haematol.2014.112037>.
- Armoiry X, et al. Systematic review and network meta-analysis of treatment outcomes for multiple myeloma. *J Clin Oncol*. 2017;35(25):2975–6.
- Botta C, et al. Network meta-analysis of randomized trials in multiple myeloma: efficacy and safety in relapsed/refractory patients. *Blood Adv*. 2017;1(7):455–66.
- Higgins JP, Green S. *Cochrane handbook for systematic reviews of interventions*, vol. 4. New Jersey: John Wiley & Sons; 2011.
- Wells G, et al. The Newcastle-Ottawa scale (NOS) for assessing the quality of nonrandomized studies in meta-analysis. Ottawa: The Ottawa Health Research Institute; 2011.
- Cameron C, et al. Network meta-analysis incorporating randomized controlled trials and non-randomized comparative cohort studies for assessing the safety and effectiveness of medical treatments: challenges and opportunities. *Systematic Rev*. 2015;4(1):147.
- Sturtz S, Ligges U, Gelman A. R2WinBUGS: a package for running WinBUGS from R. *J Stat Softw*. 2005;12(3):1–16.
- Team, R.C. R: A language and environment for statistical computing, vol. 2015. Vienna: R Foundation for Statistical Computing; 2014.
- Salanti G, Ades A, Ioannidis JP. Graphical methods and numerical summaries for presenting results from multiple-treatment meta-analysis: an overview and tutorial. *J Clin Epidemiol*. 2011;64(2):163–71.
- Schmitz S, et al. How similar is similar enough? The impact of single arm matching to connect otherwise disconnected evidence networks: a case study in multiple myeloma, in ISBA 2016. Sardinia; 2016.
- Dimopoulos MA, et al. Efficacy of bortezomib plus dexamethasone versus bortezomib monotherapy in patients with relapsed/refractory multiple myeloma: an interim report from an International electronic observational study. *Am Soc Hematology*. 2010;116:3027.
- Avet-Loiseau H, et al. Impact of high-risk cytogenetics and prior therapy on outcomes in patients with advanced relapsed or refractory multiple myeloma treated with lenalidomide plus dexamethasone. *Leukemia*. 2010;24(3):623.
- Chang H, et al. Bortezomib therapy response is independent of cytogenetic abnormalities in relapsed/refractory multiple myeloma. *Leuk Res*. 2007;31(6):779–82.
- Kneppers E, et al. Analysis of efficacy and prognostic factors of lenalidomide treatment as part of a Dutch compassionate use program. *Clin Lymphoma Myeloma Leuk*. 2010;10(2):138–43.
- Moore S, et al. Weekly intravenous bortezomib is effective and well tolerated in relapsed/refractory myeloma. *Eur J Haematol*. 2013;90(5):420–5.
- Walter-Croneck A, et al. Case-adjusted bortezomib-based strategy in routine therapy of relapsed/refractory multiple myeloma shown to be highly effective—a report by Polish Myeloma Study Group. *Leuk Res*. 2014;38(7):788–94.
- Rosenbaum PR. Optimal matching for observational studies. *J Am Stat Assoc*. 1989;84(408):1024–32.
- Jaff MR, et al. Endovascular interventions for Femoropopliteal peripheral artery disease: a network meta-analysis of current technologies. *J Vasc Interv Radiol*. 2017;28:1628.
- Leahy, J. and C. Walsh, Incorporating single treatment arm evidence into a network meta analysis (if you must!). CASI 2016 University of Limerick, 2016.
- Chanan-Khan AA, et al. Phase III randomised study of dexamethasone with or without oblimersen sodium for patients with advanced multiple myeloma. *Leukemia Lymphoma*. 2009;50(4):559–65.
- Chiou T-J, et al. Randomized phase II trial of thalidomide alone versus thalidomide plus interferon alpha in patients with refractory multiple myeloma. *Cancer Investig*. 2007;25(3):140–7.
- Dimopoulos M, et al. Vorinostat or placebo in combination with bortezomib in patients with multiple myeloma (VANTAGE 088): a multicentre, randomised, double-blind study. *Lancet Oncol*. 2013;14(11):1129–40.
- Dimopoulos M, et al. Lenalidomide plus dexamethasone for relapsed or refractory multiple myeloma. *N Engl J Med*. 2007;357(21):2123–32.

52. Dimopoulos MA, et al. Carfilzomib and dexamethasone versus bortezomib and dexamethasone for patients with relapsed or refractory multiple myeloma (ENDEAVOR): a randomised, phase 3, open-label, multicentre study. *Lancet Oncol.* 2016;17(1):27–38.
53. Hjorth M, et al. Thalidomide and dexamethasone vs. bortezomib and dexamethasone for melphalan refractory myeloma: a randomized study. *Eur J Haematol.* 2012;88(6):485–96.
54. Kropff M, et al. Thalidomide versus dexamethasone for the treatment of relapsed and/or refractory multiple myeloma: results from OPTIMUM, a randomized trial. *Haematologica.* 2012;97(5):784–91.
55. Kropff M, et al. Bortezomib and low-dose dexamethasone with or without continuous low-dose oral cyclophosphamide for primary refractory or relapsed multiple myeloma: final results of a national multicenter randomized controlled phase III study. *Blood.* 2014;124(21):3470.
56. Lonial S, et al. Elotuzumab therapy for relapsed or refractory multiple myeloma. *N Engl J Med.* 2015;373(7):621–31.
57. Moreau P, et al. Ixazomib, an investigational oral proteasome inhibitor (PI), in combination with lenalidomide and dexamethasone (IRd), significantly extends progression-free survival (PFS) for patients (Pts) with relapsed and/or refractory multiple myeloma (RRMM): the phase 3 tourmaline-MM1 study (NCT01564537). *Blood.* 2015;126(23):727.
58. Orłowski RZ, et al. Phase II, randomized, double blind, placebo-controlled study comparing siltuximab plus bortezomib versus bortezomib alone in pts with relapsed/refractory multiple myeloma. *ASCO Annual Meeting Proceedings.* 2012.
59. Orłowski RZ, et al. Randomized phase III study of pegylated liposomal doxorubicin plus bortezomib compared with bortezomib alone in relapsed or refractory multiple myeloma: combination therapy improves time to progression. *J Clin Oncol.* 2007;25(25):3892–901.
60. Palumbo A, et al. Elotuzumab plus bortezomib and dexamethasone versus bortezomib and dexamethasone in patients with relapsed/refractory multiple myeloma: 2-year follow-up. *Blood.* 2015;126(23):510.
61. Richardson PG, et al. Pomalidomide alone or in combination with low-dose dexamethasone in relapsed and refractory multiple myeloma: a randomized phase 2 study. *Blood.* 2014;123(12):1826–32.
62. Nagler A, et al. Randomized placebo-controlled phase III study of perifosine combined with bortezomib and dexamethasone in relapsed, refractory multiple myeloma patients previously treated with Bortezomib. *Blood.* 2013;122(21):3189.
63. Richardson PG, et al. Bortezomib or high-dose dexamethasone for relapsed multiple myeloma. *N Engl J Med.* 2005;352(24):2487–98.
64. San-Miguel JF, et al. Panobinostat plus bortezomib and dexamethasone versus placebo plus bortezomib and dexamethasone in patients with relapsed or relapsed and refractory multiple myeloma: a multicentre, randomised, double-blind phase 3 trial. *Lancet Oncol.* 2014;15(11):1195–206.
65. Stewart AK, et al. Carfilzomib, lenalidomide, and dexamethasone for relapsed multiple myeloma. *N Engl J Med.* 2015;372(2):142–52.
66. Weber DM, et al. Lenalidomide plus dexamethasone for relapsed multiple myeloma in North America. *N Engl J Med.* 2007;357(21):2133–42.
67. White D, et al. Results from AMBER, a randomized phase 2 study of bevacizumab and bortezomib versus bortezomib in relapsed or refractory multiple myeloma. *Cancer.* 2013;119(2):339–47.
68. Hou J, et al. Ixazomib plus lenalidomide-dexamethasone (IRd) vs placebo-Rd in patients (pts) with relapsed/refractory multiple myeloma (RRMM): China continuation of TOURMALINE-MM1. *Proc Am Soc Clin Oncol.* 2016;34:8036.
69. Dimopoulos MA, et al. Daratumumab, lenalidomide, and dexamethasone for multiple myeloma. *N Engl J Med.* 2016;375(14):1319–31.
70. Garderet L, et al. Superiority of the triple combination of bortezomib-thalidomide-dexamethasone over the dual combination of thalidomide-dexamethasone in patients with multiple myeloma progressing or relapsing after autologous transplantation: the MMVAR/IFM 2005-04 randomized phase III trial from the chronic leukemia working party of the European Group for blood and marrow transplantation. *J Clin Oncol.* 2012;30(20):2475–82.
71. Palumbo A, et al. Daratumumab, bortezomib, and dexamethasone for multiple myeloma. *N Engl J Med.* 2016;375(8):754–66.
72. Fukushima T, et al. Efficacy and safety of bortezomib plus dexamethasone therapy for refractory or relapsed multiple myeloma: once-weekly administration of bortezomib may reduce the incidence of gastrointestinal adverse events. *Anticancer Res.* 2011;31(6):2297–302.
73. Hou J, et al. A multicenter, open-label, phase 2 study of lenalidomide plus low-dose dexamethasone in Chinese patients with relapsed/refractory multiple myeloma: the MM-021 trial. *J Hematol Oncol.* 2013. 6(1): p. 1.
74. Lacy M, et al. Pomalidomide (CC4047) plus low dose dexamethasone (Pom/dex) is active and well tolerated in lenalidomide refractory multiple myeloma (MM). *Leukemia.* 2010;24(11):1934–9.
75. Oehrlein K, et al. Successful treatment of patients with multiple myeloma and impaired renal function with lenalidomide: results of 4 German centers. *Clin Lymphoma Myeloma Leuk.* 2012;12(3):191–6.
76. Pantani L, et al. Bortezomib and dexamethasone as salvage therapy in patients with relapsed/refractory multiple myeloma: analysis of long-term clinical outcomes. *Ann Hematol.* 2014;93(1):123–8.
77. Richardson PG, et al. PANORAMA 2: panobinostat in combination with bortezomib and dexamethasone in patients with relapsed and bortezomib-refractory myeloma. *Blood.* 2013;122(14):2331–7.
78. Terpos E, et al. The combination of intermediate doses of thalidomide with dexamethasone is an effective treatment for patients with refractory/relapsed multiple myeloma and normalizes abnormal bone remodeling, through the reduction of sRANKL/osteoprotegerin ratio. *Leukemia.* 2005;19(11):1969–76.

Ready to submit your research? Choose BMC and benefit from:

- fast, convenient online submission
- thorough peer review by experienced researchers in your field
- rapid publication on acceptance
- support for research data, including large and complex data types
- gold Open Access which fosters wider collaboration and increased citations
- maximum visibility for your research: over 100M website views per year

At BMC, research is always in progress.

Learn more biomedcentral.com/submissions

